

WELCOME TO THE SUITE LIFE

Set in the heart of one of Seattle's most exciting neighborhoods, Level Seattle - South Lake Union brings an unparalleled hospitality experience to the city with spacious, apartment-style suites available for nightly and monthly stays.

Prepare meals in your gourmet kitchen, enjoy the convenience of in-suite laundry and make the most of your time with access to luxury lifestyle amenities including three pools, a basketball court and sprawling entertainment spaces. And, with the best of Seattle just outside your doorstep, you're close to attractions like Pike Place Market, Lumen Field, Climate Pledge Arena, and the South Lake Union waterfront. Level Seattle - South Lake Union is just steps away from the Amazon, Facebook and Google campuses. Come discover the suite way to stay in Seattle.

LOCATION

Located less than 30 minutes from Seattle-Tacoma International Airport, South Lake Union is one of Seattle's trendiest and most walkable areas. SLU is packed with many hip restaurants, food trucks, boutique shops, and bustling nightlife. It is also a growing hub for the tech industry and steps away to countless of Seattle's most admired attractions. Looking to stock your fridge? Whole Foods Market is just across the street for your convenience.

SUITES

All Level suites feature a fully equipped kitchen and dining area. For added convenience, they include in-suite laundry, in-suite storage and air conditioning. Suites have a king and/or queen-sized bed, queen-sized sofa bed and hypoallergenic linens. They also include Smart TVs in the living area and bedrooms, private phone line and wireless internet. Most suites also offer a private open-air balcony.

LIFESTYLE AMENITIES

Level's exceptional indoor-outdoor amenity spaces are designed with you and your lifestyle in mind. Maintain your exercise regimen in Level's state-of-the-art fitness center featuring premium cardio, strength and weight equipment, a yoga studio and a spin studio with Peloton bikes. Shoot hoops in the indoor court or have fun with the family on the indoor climbing wall. Float your cares away at our outdoor heated pool and hot tub or relax poolside in our luxury loungers and daybeds. Guests are also encouraged to enjoy our spacious landscaped terrace, outdoor BBQ, steam room, sauna, massage room and indoor lounge spaces.



Thank You for Choosing Level Seattle - South Lake Union

The information below will make getting here and checking in a little easier. If you have any questions or require further details, please contact us by phone or email. We look forward to seeing you in Seattle!

Driving Directions From Seattle-Tacoma International Airport (SEA)

110 Boren Ave N, Seattle, WA, 98109

- Get on WA-518 E in Tukwila from Airport Expressway toward I-5 North
- Take I-5 North to exit 167 onto Mercer Street, stay in far-left lane
- Take a left on Fairview Ave N towards Denny way
- Take a right on W Denny Way and then immediate right on Boren Ave N
- Entrance to the hotel and parking garage will be on your right
- Arrive at 110 Boren Ave N, Seattle WA

Transit Directions

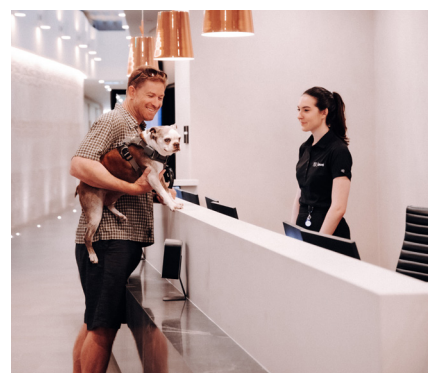
- From SeaTac take 1-line Northgate to Westlake Station (approx. 36 mins, 12 stops)
- Proceed to Level Seattle at 110 Boren Ave N (approx. 14 minutes on foot)
- Uber and Lyft ride sharing also operate throughout the city

Arrival Information

- Level Seattle - South Lake Union has an entrance on Boren Ave N
- Use the front entrance to gain access to the building
- Check in with Guest Services (check-in time is 4 pm)
- You will be required to sign the Terms and Conditions and provide a credit card for incidentals

What to Expect in Your Suite

- Fully-equipped kitchen with appliances, pots, pans, dishes, utensils and cutlery
- In-suite washer/dryer and ironing set
- Smart TV with complimentary cable
- Wireless internet, local calling and voicemail



Welcome to a stay that feels closer to home. Whether you are on an extended vacation, a business trip or in the process of moving, Level offers comfortable suites ideal for maintaining your daily routine.

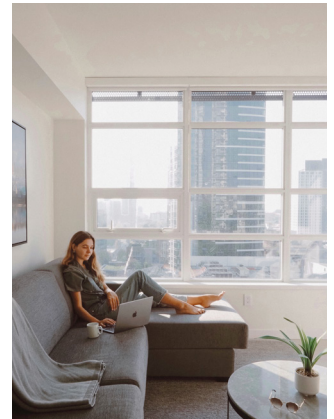
SERVICES

- Bi-weekly housekeeping
- 24 hour Guest Services
- Mail service
- Wireless internet
- Multi-channel cable
- Private phone line with complimentary local calling & voicemail
- Garbage & recycling service



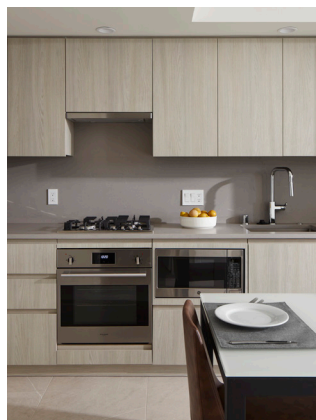
LIVING SPACE

- Contemporary design
- Open-air balconies - most apartments
- Sofa bed
- Smart TV with cable
- Air conditioning
- In-suite washer and dryer
- In-suite storage room with closet organizer



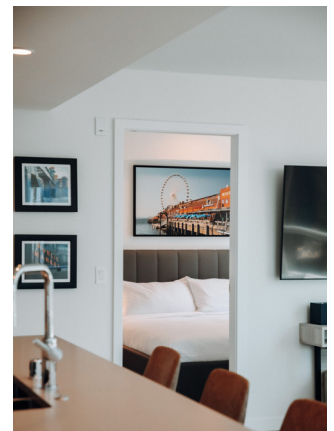
KITCHENS

- Spacious fully-equipped kitchen with integrated appliances, including a refrigerator, hood range oven, gas cooktop, microwave & dishwasher
- Complete set of cooking utensils, tableware & accessories



BEDROOMS

- King and/or queen-sized bed
- Hypnos Executive Series Mattress with two-sided pillow top
- 300 thread count bed linens
- Built in closets
- All suites feature a Smart TV with cable



BATHROOMS

- Soaker tub and/or large walk-in shower
- Wheelchair accessible shower (in some suites)
- Towels
- Bathrobes
- Soft close cabinetry



LIFESTYLE AMENITIES

- Heated outdoor & indoor pool, hot tub
- Steam room, sauna, massage room
- Yoga studio, TRX studio and spin studio with Peloton bikes
- Private indoor dining and lounge areas
- Indoor sport court and climbing wall
- Pet-friendly hotel with dog relief area and pet spa

