

A 3D rendered landscape featuring a wide, shallow river in the foreground. Along the left bank, a line of colorful shipping containers (red, blue, green, purple, yellow) is stacked. The background consists of large, rugged mountains with sparse green trees. The scene is lit with soft, golden light, suggesting a sunset or sunrise.

MIDDLE GROUND

HANNAH CHEBELEU 2021

PREFACE.

Interior Architecture BFA Capstone - Hannah Chebeleu

Cornish College of the Arts

Seattle, Washington

January 11 - April 26, 2021 (105 days)

The expectation of the capstone project is to “document a body of focused, self-initiated work that demonstrates conceptual understanding and technical ability. The project will demonstrate the ability to think, speak, and write clearly and effectively with regard to the creative and scholarly practice.”¹

This semester I focused on the practice of getting thoughts out of my head into reality.

I questioned my method of making by analyzing the stories that live within each object and concept I have made.

The global pandemic forced me to stay grounded and reflect on the life that led me to study interior architecture at an art school in Seattle. This project will illustrate what I have learned and act as a stepping stone for the next phase of my life as a designer.

¹ <https://www.saic.edu/academics/departments/academic-spine/capstone>

PREFACE.

In 2019 I traveled alone by train across Europe with a designer's agenda. I set out to study the city centers by analyzing the culture and architecture.

My studies were focused more on what I would eat, and where I would sleep than making technical connections with the spaces. Photos and connections I made with people outweigh the memory of fatigue. A poem I wrote last semester in preparation for a project with a program I had no cultural connection to illustrates that concept of give and take in a design setting. It is also a reflection of how I saw on this trip.

Take and Give

To have a voice,
is to listen.

To exhale all of me into all of the world,
is to inhale a piece of the world into all of me.
To breathe the air of space in which my lungs exist.

To form a new container
is to express what the container is not.
To reflect what I do not know
is to understand what I need to learn.

Actuating a dream
is to escape a nightmare.
Child's breath is weightless;
A child's desire is pure.

-Hannah Chebeleu 2020



42 Days 24 Cities

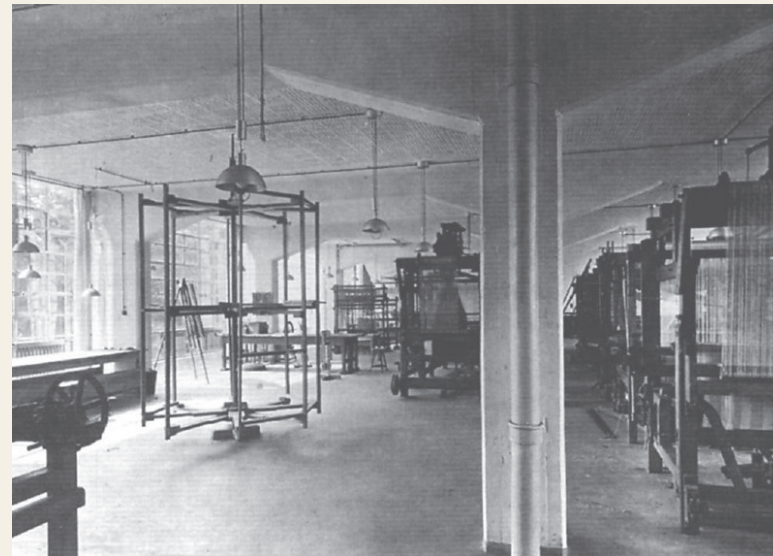
7/18	London, England
7/19	Bonn, Germany
7/20	Köln, Germany
7/21*	Düsseldorf, Germany
7/21 *	Eindhoven, Netherlands
7/21	Amsterdam, Netherlands
7/23*	Hamburg, Germany
7/23*	Wittenberg, Germany
7/23	Berlin, Germany
7/25*	Dessau-Roßlau, Germany
7/25*	Dresden, Germany
7/25	Prague, Czechia
7/27	Split, Croatia
8/1*	Balaton, Hungary
8/1	Budapest, Hungary
8/12*	Vienna, Austria
8/13	Barcelona, Spain
8/16	Valencia, Spain
8/17	Granada, Spain
8/18	Málaga, Spain
8/19	Seville, Spain
8/20	Faro, Portugal
8/22	Portimão, Portugal
8/23	Lisbon, Portugal
8/26	London, England

* Detours, half day visits

VISITING PLACES I'VE STUDIED



Weaving Studio, Bauhaus, Dessau, Germany (7/19)



Human Centered Design (4/19) Gunta Stolz lifestyle abstraction



Paperhouse by Heatherwick Studio, London, UK (8/19)



Materials + Processes (4/19) Scale Model

Like meeting a friend.
Conversations picked
up right where we left
off, only adding to our
relationship.

I got acquainted with their
friends and hometown.
I was never really alone.



Human Centered Design (4/19) Gunta Stoltz's imaginary home



PAST.

Moments have been grounded in memories.
Departure from a place. I see all I know.

PRESENT.

On the train- I am able to reflect where
I've been and dream of the expectations
of the destination.

A floating space similar to my mind.

FUTURE?

Arriving in a new place. Expectations meet
reality. How do I make expectations realistic,
and retain the dreamlike feeling?

CONCEPT.

Artist Residency + Community Center of the Arts.

How do I know what to make and when do I create something?

I remain in the floating present until I ground the present into the past. A cycle that will continue forever. An eternal return. Giving and taking; seeing and making.

Nature is a harmonious cycle of give and take. To see and make harmoniously is to retain honesty. I strive to make in harmony with my self. What I make is determined by where I am, and what I've learned.

This harmony is experienced when I travel by train. A physical space to live in side my mind.

The physical product of my research manifested itself in an artist residency on a train.

This program provides basic needs; a place to rest eat and shower. This allows the artists to have an intense connection with the landscape and create a body of work that is honest and present.

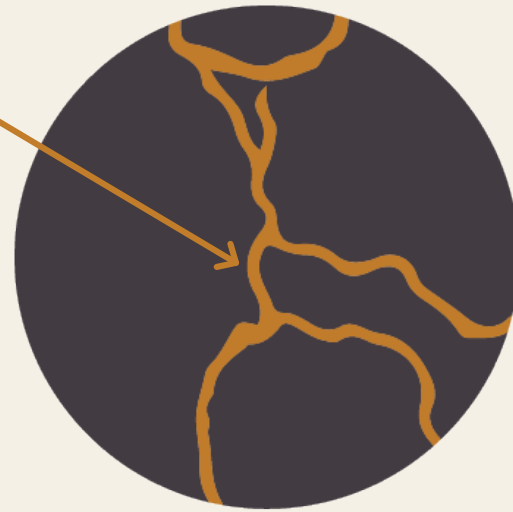
After the journey, the shipping container units will have lived a life of movement. The ethos of the residency will live on in a grounded site. Providing a community with the resources to create in an environment of awareness to the changing world.

SITE

Traveling on the Railroad, then Grounded in a Community

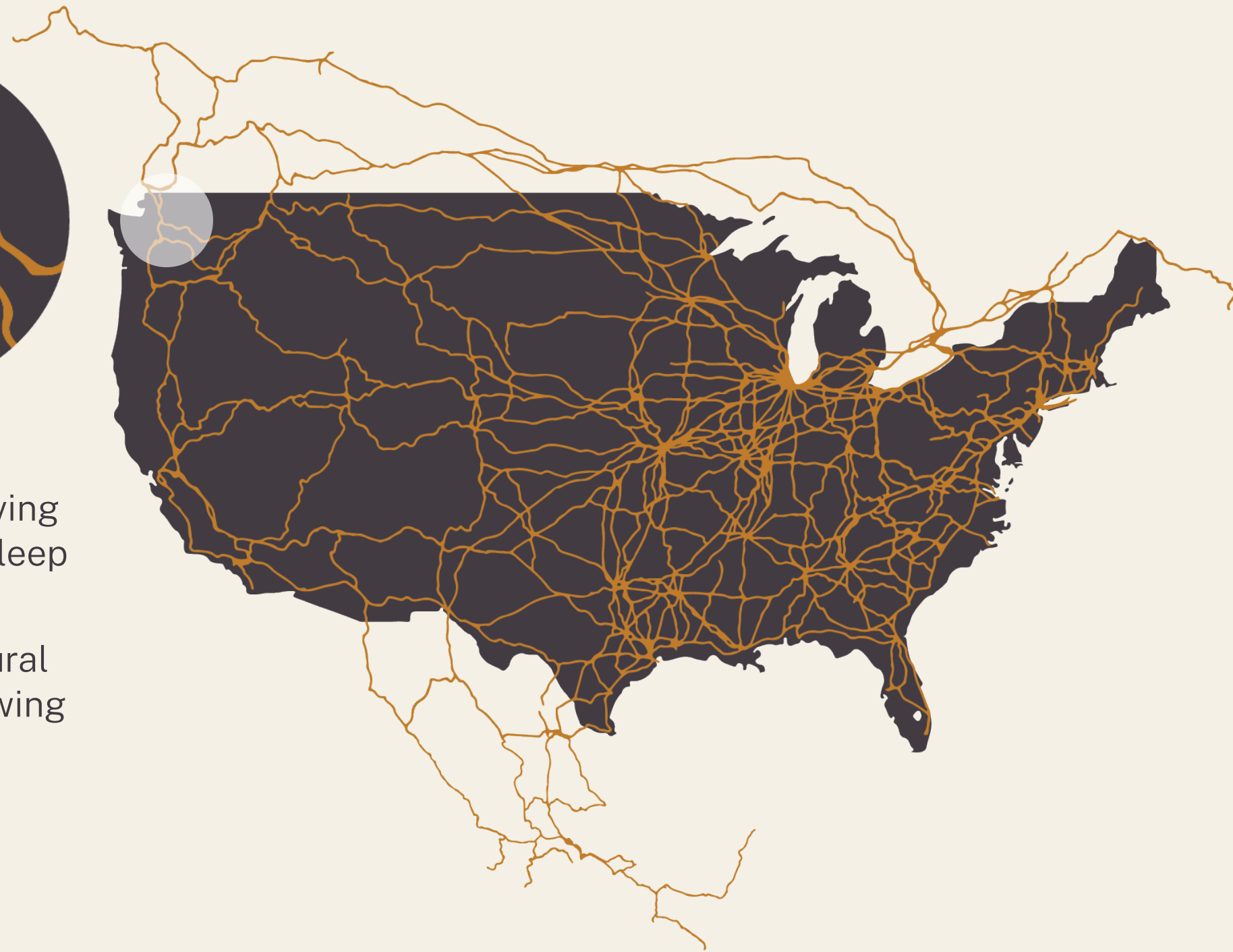


Example Site
Georgetown, Seattle, WA, U.S.A.



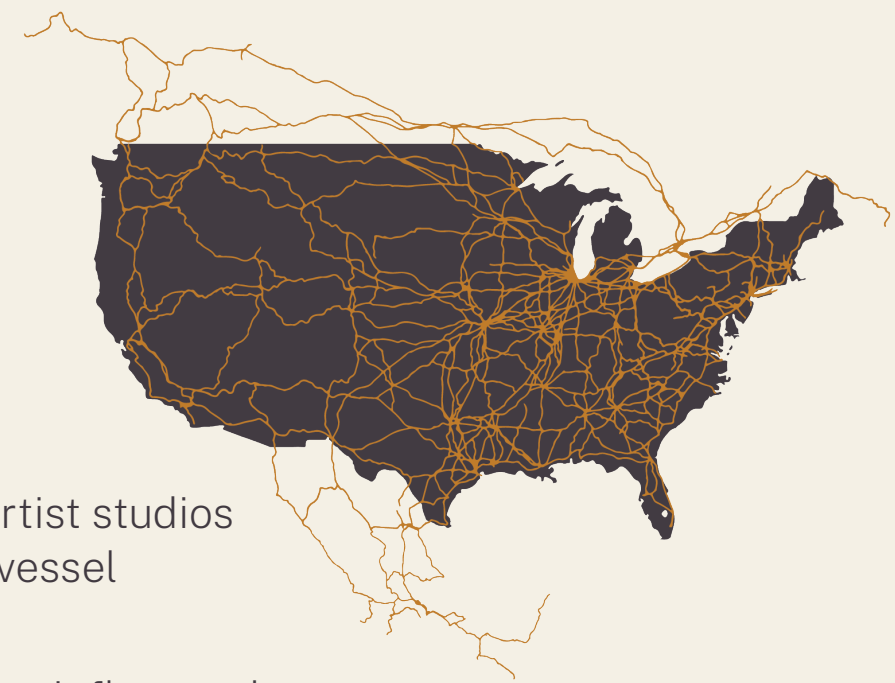
Phase 1 - On the railroad supporting artists with a moving community. A safe place to sleep and studio space to create.

Phase 2 - Grounded as a cultural hub to support an active growing community. The story of the journey lives on.



ON THE RAILROAD

Artist residency - basic amenities and a community of creatives.

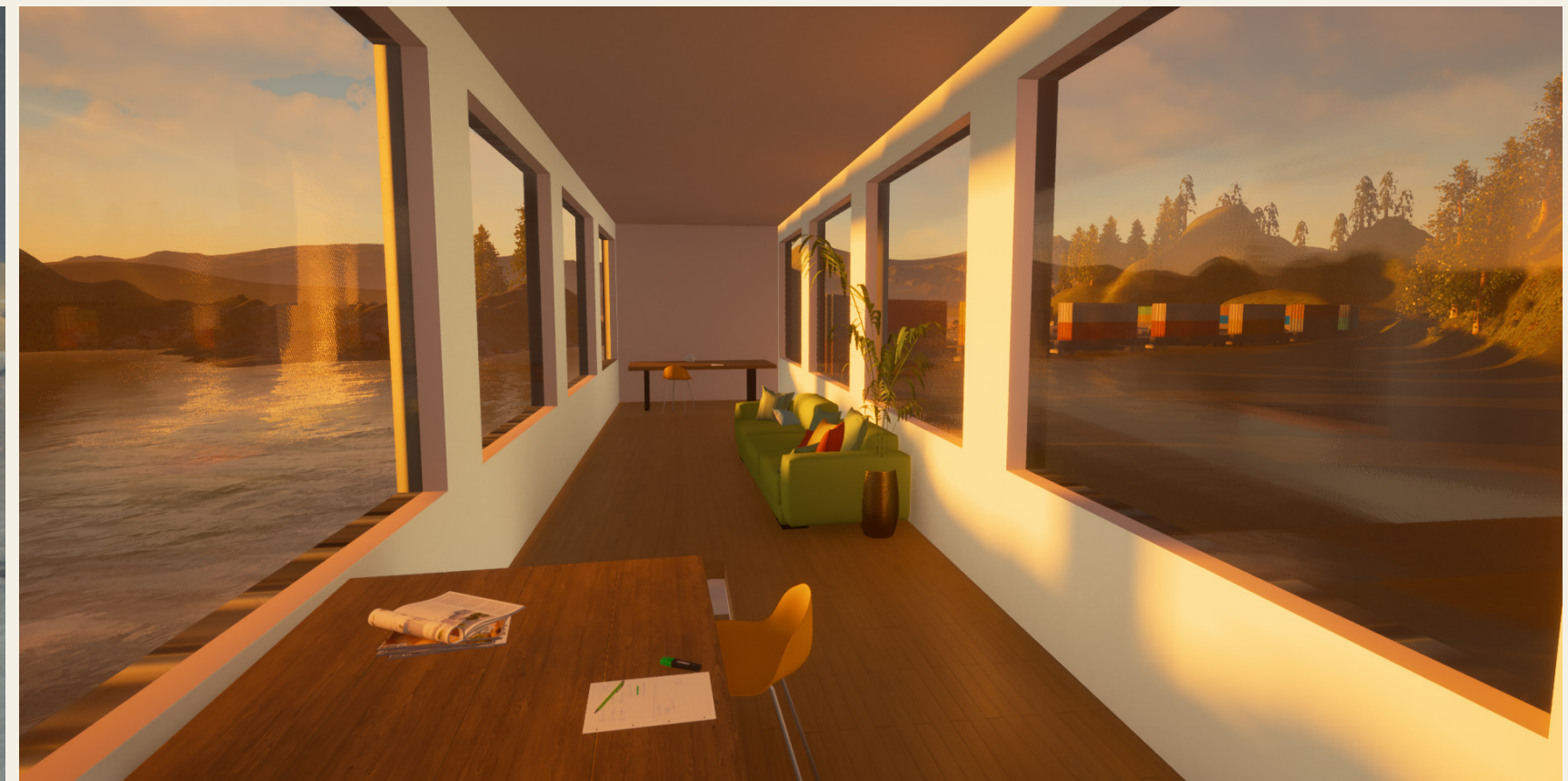


Art education teaches the communication of the in-between. America has cut art education from early education, and Art colleges are constantly shutting down. While major cities have plenty of spaces dedicated to art, towns in between have an artist population without space to showcase their work.

The neglect of Art education speaks to utility of artists. Art is an integral role in a progressive community.

Re-purpose used shipping containers into artist studios and living spaces. This new program of the vessel symbolizes artists as utility.

Being in an isolated unit creating works of art influenced by the constant changing environment. Artist's reflections of the landscape will promote the idealistic reality that the artist's perspective is a utility of cultural progression.





SITE - FUTURE

Georgetown, Seattle, WA, U.S.A.

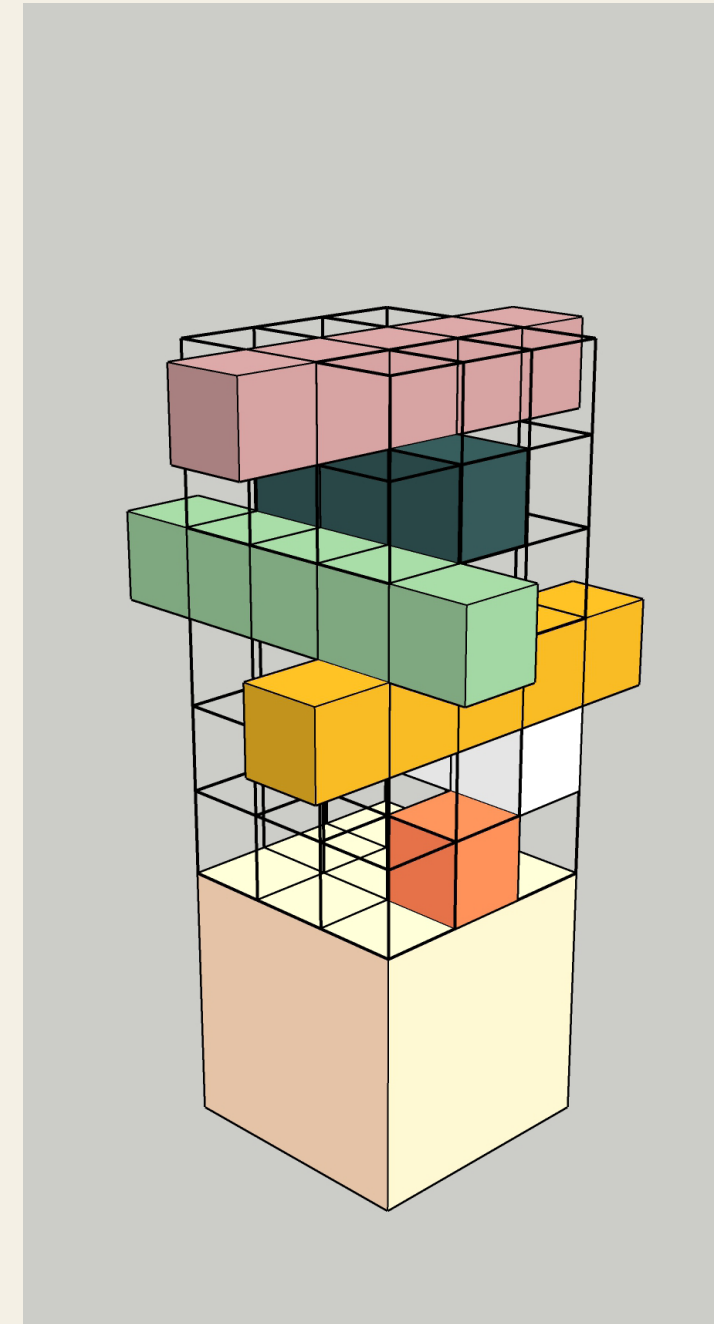


The Georgetown neighborhood is the birthplace of King County. Home to Seattle's first railroad and the original Rainer Brewery.

Now a tiny enclave of homes and businesses hemmed in by factories, warehouses, freeways, railroads, barge terminals, and airplanes. Georgetown is a model resting place for this residency because of its history and growing community of artists.

As intended, the grounded residency will provide studios for public use and showrooms to elevate works.

EXHIBITION.





Work in progress sculpture will be exhibited at the Cornish Beebe gallery April 29-May 8, 2021 only for Cornish students.

1013 1st Ave,
Seattle, WA

Final sculpture will be on exhibition at Museum of Museums August 22-28, 2021

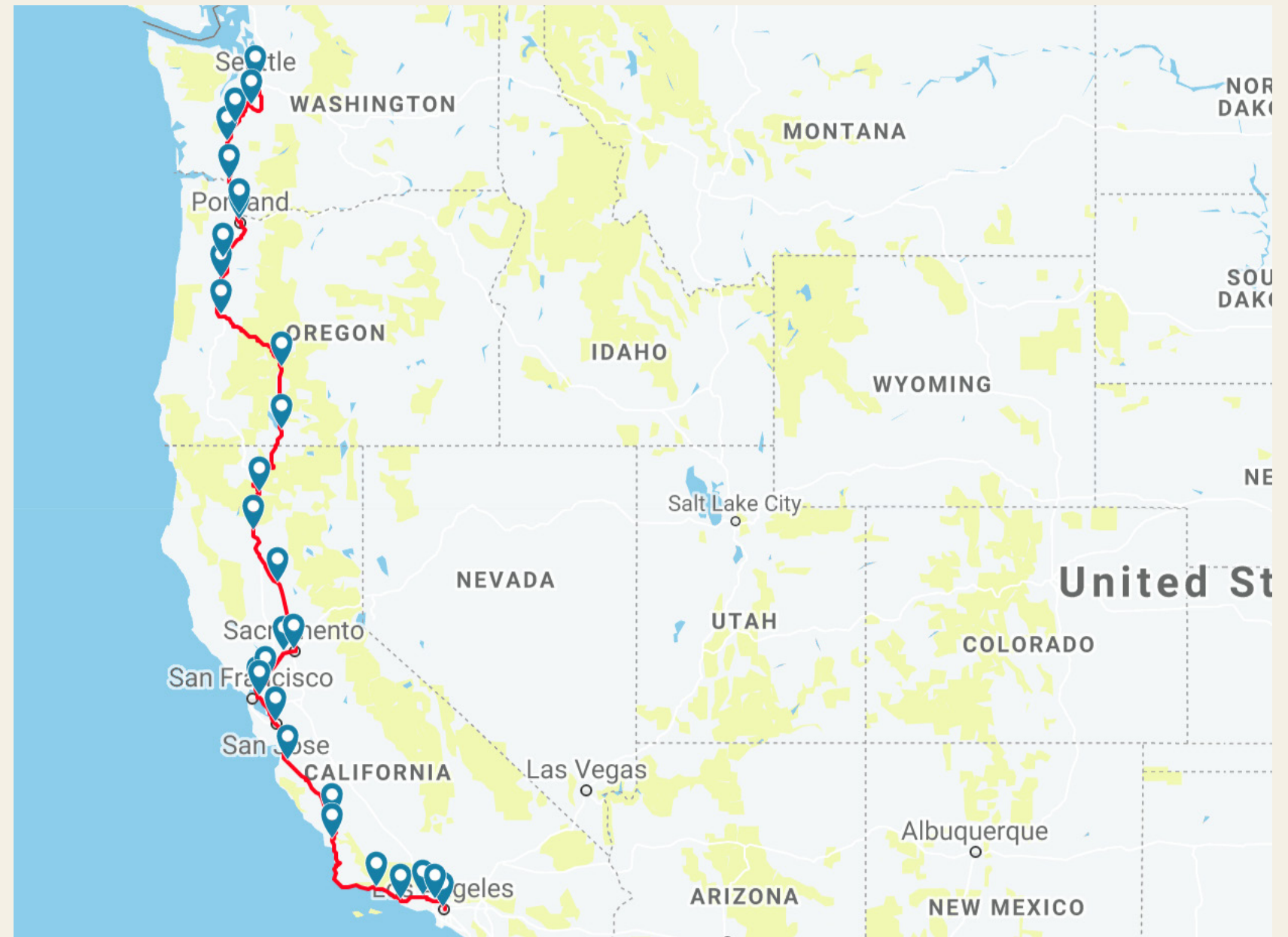
900 Boylston Ave,
Seattle, WA

SEATTLE - SAN JOSE

A 24 hour ride on the Coast Starlight Amtrak.

March 13-14, 17-18, 2021

This trip was for research. I used it as a mock-reidency and formulated my thoughts. I was able to make the big phenomenological connections to communicate this project. Scenes from this stretch of the American landscape are built into the sculpture.









REFERENCE. SYMBOL.

Train : Movement through time and space. Imported goods to the city allow it to thrive.

Shipping Container : Modular unit which transports goods to growing communities. International Vernacular.

Artist's Mind : Living creator. Active necessity in upholding progress. Transcends time and space.

Art Community : Physical space relating to the value of arts and culture.

People of America: Progressive perspective. To have a space to understand constant movement, and giving back art education.

Landscape of America: Diverse biomes and ways of living.

— **Capstone:** Capping all my knowledge thus far.

— **This Project:** My current application of passion.

— **The Process:** How I view my place in the world. My ability and communication platform.

— **The Theory:** Past, Present, Future all having life and meaning/connectivity. Theory of growth, progressive culture. Connecting artistic mind to stuck communities.

(NOT) ANOTHER TOWER

TATIANA BILBAO ESTUDIO (Case Study)
Mexico City, Mexico

I visited this piece at the SFMOMA and connected the way I experience the train ride to a static physical object. The viewer is able to move around the sculpture and see into different compartments. I hope to visualize my concept in this way so anyone can feel how it would be to live and work on a train.

“How can space be manipulated and connected to create truly vertical communities?” Tatiana Bilbao Estudio’s proposal attempts to reconcile vertical urbanization within a tower typology capable of fostering a city’s civic character.”

-2017.chicagoarchitecturebiennial.org

