

# CONSUMER INFORMATION

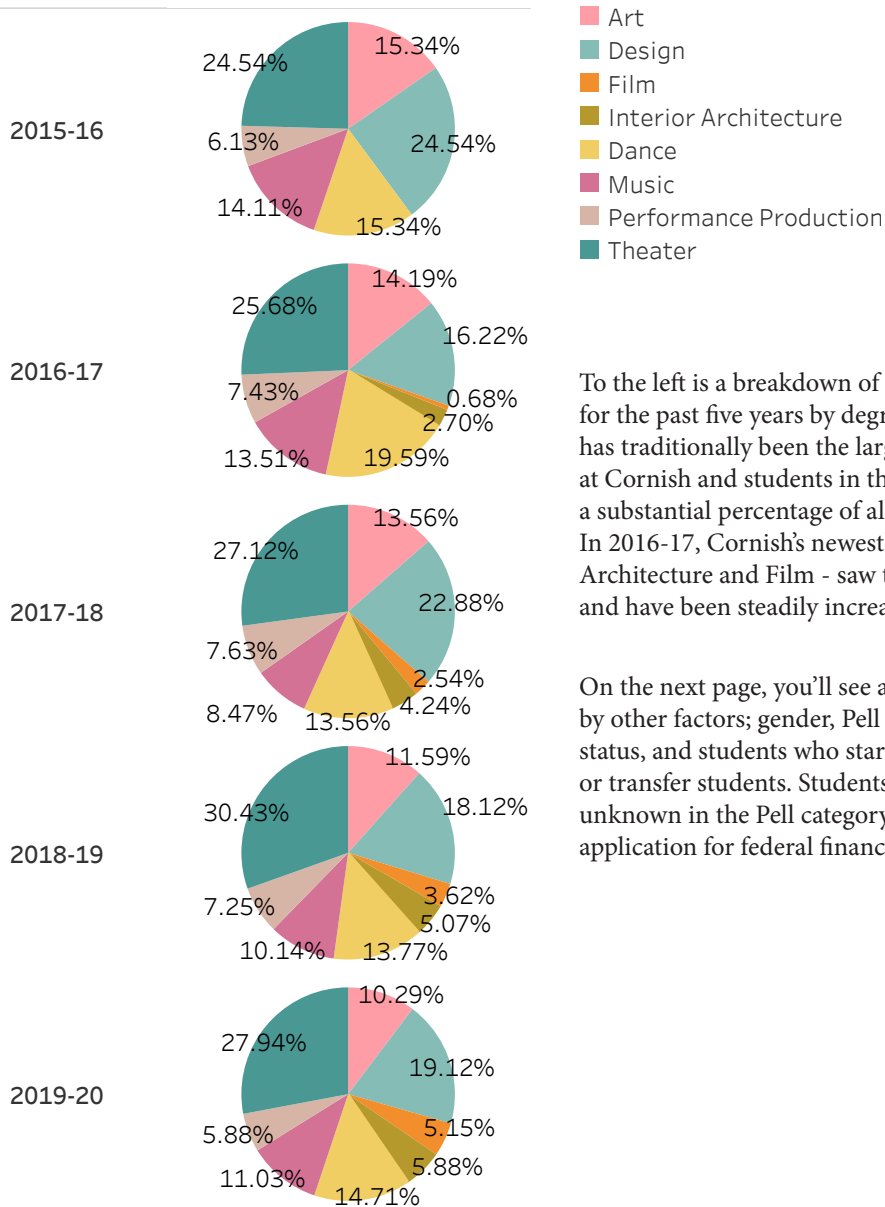
This document includes information regarding Cornish's graduating classes and retention and persistence rates over the past five years, broken down by race, ethnicity and gender as well as a number of other factors. Because Cornish is a small school, in order to protect the privacy of our students we have presented this information in percentages rather than individual numbers.

For more information, we encourage you to utilize the National Center for Education Statistics/Integrated Postsecondary Education Data System. [On this website you can look for additional information about Cornish, as well as select other schools to compare us to.](#)

To get an idea of what financial aid to expect from Cornish, please use the [Net Price Calculator](#). Please keep in mind that Cornish reset the cost of tuition and financial aid starting in the 2019-20 academic year, so these numbers are only an estimate.

# GRADUATION DEMOGRAPHICS

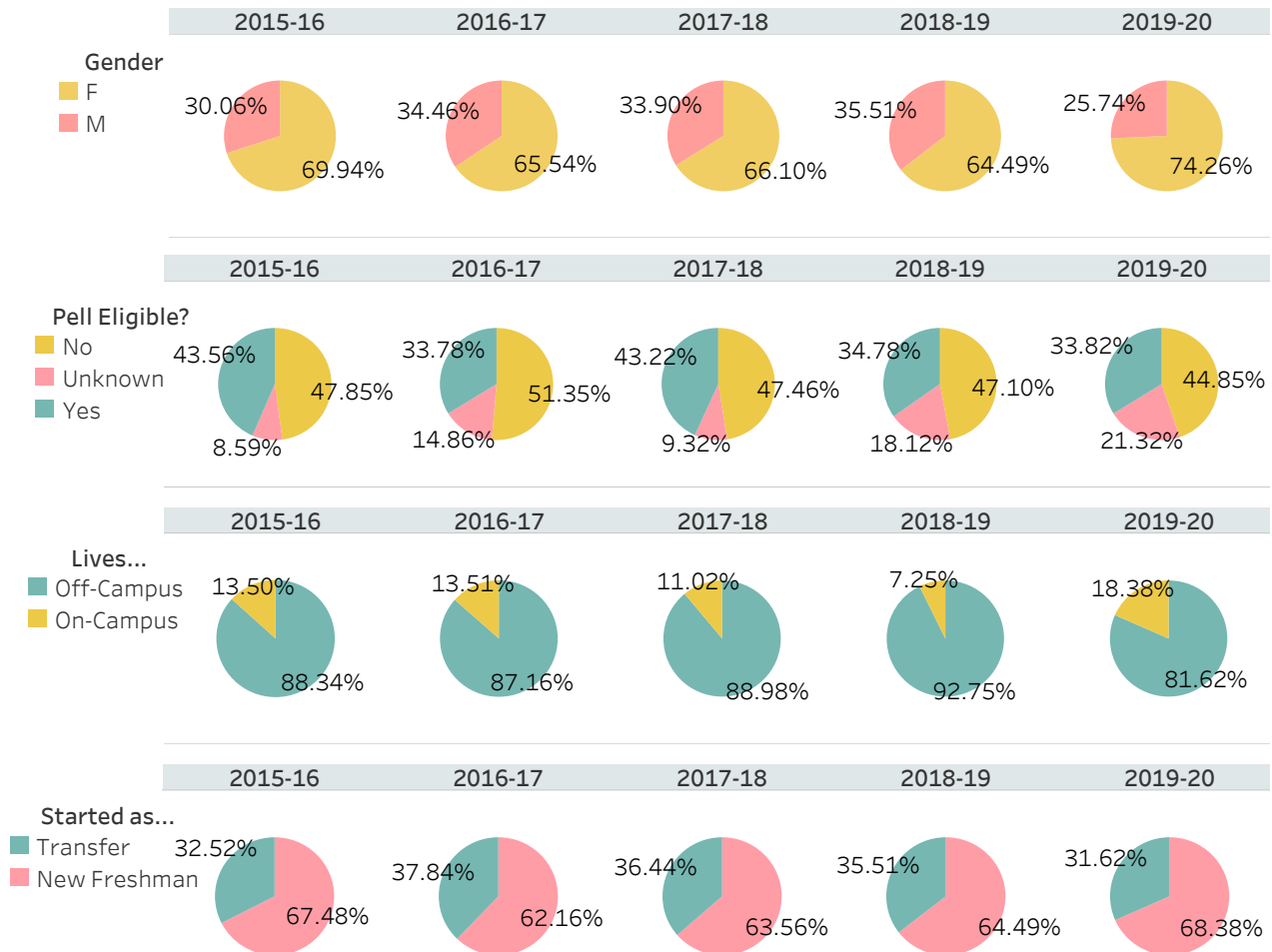
Graduating Classes by Major



To the left is a breakdown of each graduating class for the past five years by degree program. Theater has traditionally been the largest degree program at Cornish and students in that program make up a substantial percentage of all graduating classes. In 2016-17, Cornish's newest programs - Interior Architecture and Film - saw their first graduating class, and have been steadily increasing size and enrollment.

On the next page, you'll see a breakdown of each class by other factors; gender, Pell eligibility, commuter status, and students who started as first-time freshmen or transfer students. Students who are marked as unknown in the Pell category did not submit an application for federal financial aid.

## Graduating Classes by...



Over the next few pages you'll find information about our graduating classes broken down by ethnicity/race and gender as specified by the Department of Education, and then further broken down by degree program. The following charts should be read vertically - for example, when referring to graduating students identifying as White and female in 2015, they comprise 58.77% of all female students graduating that year, not 58.77% of the entire graduating class.



## Graduating Classes by Race and Gender

		2015-16	2016-17	2017-18	2018-19	2019-20
<b>F</b>	American or Alaska Native	0.88%			1.12%	
	Asian	6.14%	8.25%	5.13%	5.62%	2.97%
	Black or African American	4.39%	2.06%	5.13%	1.12%	
	Hispanics of any race	10.53%	7.22%	12.82%	15.73%	10.89%
	Native Hawaiian/Pacific Islander	0.88%		1.28%	1.12%	0.99%
	Nonresident Alien	6.14%	4.12%	2.56%		1.98%
	Two or more races	10.53%	7.22%	16.67%	7.87%	8.91%
	Unknown	1.75%	4.12%	1.28%	6.74%	2.97%
	White	58.77%	67.01%	55.13%	60.67%	71.29%
<b>M</b>	American or Alaska Native	2.04%				5.71%
	Asian	6.12%		10.00%	6.12%	8.57%
	Black or African American	2.04%	3.92%	2.50%		14.29%
	Hispanics of any race	18.37%	7.84%	5.00%	12.24%	17.14%
	Nonresident Alien	4.08%	1.96%	2.50%		
	Two or more races		7.84%	5.00%	6.12%	11.43%
	Unknown	6.12%	1.96%	2.50%	4.08%	8.57%
	White	61.22%	76.47%	72.50%	71.43%	34.29%

## Graduating Class Demographics: Film

		2016-17	2017-18	2018-19	2019-20
<b>F</b>	Hispanics of any race			50.00%	
	White	100.00%		50.00%	100.00%
<b>M</b>	American or Alaska Native				20.00%
	Asian				20.00%
	Black or African American				20.00%
	Two or more races				20.00%
	White		100.00%	100.00%	20.00%

## Graduating Class Demographics: Interior Architecture

		2016-17	2017-18	2018-19	2019-20
<b>F</b>	Hispanics of any race		33.33%	16.67%	14.29%
	Nonresident Alien	50.00%	33.33%		14.29%
	Two or more races			16.67%	
	Unknown	50.00%			14.29%
	White		33.33%	66.67%	57.14%
<b>M</b>	Asian				100.00%
	Nonresident Alien	50.00%			
	White	50.00%	100.00%	100.00%	

## Graduating Class Demographics: Art

		2015-16	2016-17	2017-18	2018-19	2019-20
F	American or Alaska Native				9.09%	
	Asian			20.00%		10.00%
	Hispanics of any race	17.65%	8.33%	10.00%	18.18%	10.00%
	Nonresident Alien	11.76%	8.33%			
	Two or more races	11.76%	8.33%	30.00%	18.18%	
	Unknown				9.09%	
	White	58.82%	75.00%	40.00%	45.45%	80.00%
M	American or Alaska Native	12.50%				
	Black or African American					50.00%
	Hispanics of any race	37.50%		16.67%		25.00%
	Nonresident Alien	12.50%		16.67%		
	Two or more races			16.67%		
	Unknown	12.50%	11.11%			
	White	25.00%	88.89%	50.00%	100.00%	25.00%

## Graduating Class Demographics: Dance

		2015-16	2016-17	2017-18	2018-19	2019-20
F	Asian		7.69%		6.25%	5.56%
	Black or African American	9.52%	3.85%	6.67%		
	Hispanics of any race	4.76%	15.38%	20.00%	18.75%	22.22%
	Native Hawaiian/Pacific Islander			6.67%		
	Nonresident Alien	9.52%	3.85%			
	Two or more races	9.52%	3.85%	6.67%	6.25%	11.11%
	Unknown		3.85%		6.25%	5.56%
	White	66.67%	61.54%	60.00%	62.50%	55.56%
M	Black or African American		33.33%	100.00%		
	Hispanics of any race	25.00%				100.00%
	Two or more races				33.33%	
	White	75.00%	66.67%		66.67%	

## Graduating Class Demographics: Design

		2015-16	2016-17	2017-18	2018-19	2019-20
F	American or Alaska Native	3.45%				
	Asian	17.24%	33.33%	11.11%	16.67%	4.17%
	Black or African American			5.56%		
	Hispanics of any race	17.24%	6.67%	11.11%	11.11%	8.33%
	Native Hawaiian/Pacific Islander	3.45%				
	Nonresident Alien	6.90%		5.56%		4.17%
	Two or more races	3.45%		16.67%	5.56%	8.33%
	Unknown	3.45%		5.56%	5.56%	
	White	44.83%	60.00%	44.44%	61.11%	75.00%
M	Asian	18.18%		22.22%	28.57%	
	Black or African American		11.11%			
	Hispanics of any race	18.18%				50.00%
	Two or more races		11.11%	11.11%		
	Unknown			11.11%		
	White	63.64%	77.78%	55.56%	71.43%	50.00%

## Graduating Class Demographics: Music

		2015-16	2016-17	2017-18	2018-19	2019-20
<b>F</b>	Black or African American	9.09%				
	Hispanics of any race	9.09%	14.29%	25.00%	33.33%	
	Nonresident Alien	9.09%	14.29%			
	Two or more races			25.00%		
	Unknown		14.29%			
	White	72.73%	57.14%	50.00%	66.67%	100.00%
<b>M</b>	American or Alaska Native					8.33%
	Asian			16.67%		
	Black or African American	8.33%				
	Hispanics of any race	8.33%	7.69%		9.09%	8.33%
	Two or more races		7.69%			25.00%
	Unknown	8.33%			9.09%	16.67%
	White	75.00%	84.62%	83.33%	81.82%	41.67%

## Graduating Class Demographics: Performance Production

		2015-16	2016-17	2017-18	2018-19	2019-20
<b>F</b>	Asian	10.00%	14.29%		14.29%	
	Hispanics of any race	10.00%				
	Two or more races			16.67%		12.50%
	Unknown		14.29%			12.50%
	White	80.00%	71.43%	83.33%	85.71%	75.00%
<b>M</b>	Hispanics of any race				33.33%	
	White		100.00%	100.00%	66.67%	

## Graduating Class Demographics: Theater

		2015-16	2016-17	2017-18	2018-19	2019-20
<b>F</b>	Asian	3.85%				
	Black or African American	7.69%	3.70%	9.09%	3.85%	
	Hispanics of any race	3.85%		9.09%	15.38%	10.34%
	Native Hawaiian/Pacific Islander				3.85%	3.45%
	Two or more races	26.92%	18.52%	18.18%	7.69%	13.79%
	Unknown	3.85%			11.54%	
	White	53.85%	77.78%	63.64%	57.69%	72.41%
<b>M</b>	Asian	7.14%		10.00%	6.25%	11.11%
	Black or African American					22.22%
	Hispanics of any race	14.29%	27.27%	10.00%	25.00%	11.11%
	Nonresident Alien	7.14%				
	Two or more races		18.18%		12.50%	
	Unknown	7.14%			6.25%	11.11%
	White	64.29%	54.55%	80.00%	50.00%	44.44%

# RETENTION

“Retention” refers to the percentage of students who start as new freshman and who haven’t been enrolled in a degree-seeking program before, who stay enrolled in a program at Cornish. As this consumer information document only comprises five years of data, graduation numbers are only available for students who started in 2015-16. The numbers below refer to enrollment statuses as of Fall 2020.

Year	* College Action	** Enrolled	Graduated	*** Not Returning	Withdrawal
2015-16	3.70%	3.70%	46.56%	20.63%	26.98%
2016-17	4.74%	47.37%	2.11%	21.05%	26.84%
2017-18	6.35%	56.08%		13.76%	30.69%
2018-19	5.44%	65.99%		10.88%	28.57%
2019-20	2.14%	57.86%		0.71%	39.29%

Below, you will find retention metrics disaggregated by gender, Pell eligibility, and commuter status. These numbers reflect the grand total of all students in each category over the past five years. Retention demographics were not broken down by ethnicity, gender, or department; you’ll be able to find this information in the following section on persistence.

## Retention by...



\*Students who were expelled or suspended

\*\*Students who are actively enrolled in a degree program

\*\*\*Students who are withdrawn and who did not return, but did not actively indicate they were withdrawing

\*\*\*\*Students who did not indicate binary gender

# PERSISTENCE

## Overall Persistence

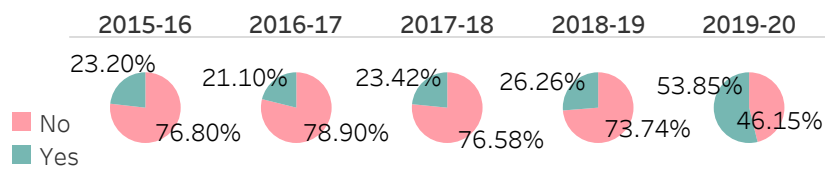
Year	Class Level	Active	Depart..
2015-16	Freshman	68.92%	31.08%
	Sophomore	76.36%	23.64%
	Junior	94.68%	5.32%
	Total	78.35%	21.65%
2016-17	Freshman	70.78%	29.22%
	Sophomore	83.18%	16.82%
	Junior	92.78%	7.22%
	Total	80.69%	19.31%
2017-18	Freshman	68.20%	31.80%
	Sophomore	83.50%	16.50%
	Junior	94.62%	5.38%
	Total	80.31%	19.69%
2018-19	Freshman	72.41%	27.59%
	Sophomore	80.68%	19.32%
	Junior	92.49%	7.51%
	Total	81.65%	18.35%
2019-20	Freshman	58.86%	41.14%
	Sophomore	77.47%	22.53%
	Junior	80.51%	19.49%
	Total	72.41%	27.59%

Like retention, persistence refers to a percentage of students who remain enrolled at the school. However, persistence isn't limited to first-time freshman, and it's looked at in terms of simply continuing to the next semester - it also excludes students who graduate. For example, in the chart to the left you can see that 68.92% of all freshmen at Cornish in 2015-16 remained enrolled and became sophomores the following year. Of that same group, sophomores in 2016-17, 83.18% went on to become juniors in 2017-18. The chart also offers the average rate of persistence for a given academic year.

Because students who graduate are not included, seniors have been left out of this table. There are always a handful of seniors who withdraw or who do not graduate and remain enrolled for another semester, but due to the size of that population including the percentages would warp other reliable information. For example, if three seniors remain enrolled and one withdraws, it appears that 75% of seniors continue to a future year.

The two categories of persistence are "active" and "departed". Active students refer to those who remained enrolled in a degree program, while departed students reflect any student who stopped attending classes for any reason barring graduation.

## Departed Students taking a Leave of Absence



## Reasons for Leave of Absences

Year	COVID-19	Financial	Personal	Study Abroad	Transfer
2015-16		43.33%	46.67%		10.00%
2016-17		3.70%	74.07%		22.22%
2017-18		15.38%	76.92%		7.69%
2018-19		23.08%	76.92%		
2019-20	37.14%	18.57%	42.86%	1.43%	

Cornish offers the option to take a leave of absence (LOA) to students who are withdrawing, which holds their place at the school for a year. The percentage of students who take an LOA has increased over the past few years; due to the COVID-19 pandemic, this number spiked in 2019-20. We've also included the reasons students often give as the cause for taking an LOA. The majority of students taking an LOA at Cornish do so for personal reasons, which can include medical or family concerns.



The following charts break persistence down by race, ethnicity and gender; and by race and ethnicity for each major program. These charts are meant to be read horizontally within each academic year. For example, in the chart below 88.89% of male Asian students remained active, while 11.11% left the college in 2015-16. The following year 80% of all male Asian students remained active, while 20% departed. Any cell marked 100% means that all students in that given category for that year either departed or remained active.

Due to the complexity of the data, gender breakdowns were not provided for department-specific information. While Cornish works on implementing an interactive data dashboard which will include all this information, we encourage you to refer to NCES for any additional questions about Cornish you might have.

## Persistence by Race/Ethnicity and Gender

		2015-16		2016-17		2017-18		2018-19		2019-20	
		Active	Depart..	Active	Depart..	Active	Depart..	Active	Depart..	Active	Depart..
<b>B</b>	Asian									100.00%	
	Hispanics of any race									50.00%	50.00%
	Two or more races									50.00%	50.00%
	Unknown									100.00%	
	White			100.00%			100.00%			75.00%	25.00%
<b>F</b>	American or Alaska Native			75.00%	25.00%	33.33%	66.67%	100.00%		100.00%	
	Asian	86.96%	13.04%	73.68%	26.32%	100.00%		71.43%	28.57%	83.33%	16.67%
	Black or African American	72.73%	27.27%	85.71%	14.29%	87.50%	12.50%	63.64%	36.36%	62.50%	37.50%
	Hispanics of any race	78.95%	21.05%	85.71%	14.29%	73.08%	26.92%	85.71%	14.29%	75.68%	24.32%
	Native Hawaiian/Pacific Is..	66.67%	33.33%	75.00%	25.00%	100.00%		100.00%			
	Nonresident Alien	54.55%	45.45%	100.00%		100.00%		71.43%	28.57%	33.33%	66.67%
	Two or more races	82.35%	17.65%	88.89%	11.11%	93.94%	6.06%	69.23%	30.77%	67.74%	32.26%
	Unknown	64.00%	36.00%	58.82%	41.18%	75.00%	25.00%	91.67%	8.33%	73.33%	26.67%
	White	79.23%	20.77%	81.55%	18.45%	83.11%	16.89%	84.21%	15.79%	72.83%	27.17%
<b>M</b>	American or Alaska Native			100.00%		100.00%		100.00%			
	Asian	88.89%	11.11%	80.00%	20.00%	85.71%	14.29%	75.00%	25.00%	83.33%	16.67%
	Black or African American	70.00%	30.00%	58.33%	41.67%	55.56%	44.44%	87.50%	12.50%	57.14%	42.86%
	Hispanics of any race	80.95%	19.05%	75.00%	25.00%	82.14%	17.86%	89.29%	10.71%	79.17%	20.83%
	Native Hawaiian/Pacific Is..				100.00%		100.00%				
	Nonresident Alien	100.00%		100.00%		50.00%	50.00%	33.33%	66.67%		100.00%
	Two or more races	78.57%	21.43%	68.75%	31.25%	78.57%	21.43%	56.25%	43.75%	72.73%	27.27%
	Unknown	57.14%	42.86%	75.00%	25.00%	75.00%	25.00%	100.00%		87.50%	12.50%
	White	80.15%	19.85%	80.33%	19.67%	72.81%	27.19%	77.01%	22.99%	68.42%	31.58%

## Persistence by Race and Ethnicity: Art

	2015-16		2016-17		2017-18		2018-19		2019-20	
	Active	Depart..	Active	Depart..	Active	Departed	Active	Departed	Active	Departed
American or Alaska Native			100.00%		50.00%	50.00%				
Asian	75.00%	25.00%	60.00%	40.00%	66.67%	33.33%	62.50%	37.50%	60.00%	40.00%
Black or African American	50.00%	50.00%	40.00%	60.00%	100.00%		100.00%		66.67%	33.33%
Hispanics of any race	66.67%	33.33%	75.00%	25.00%	69.23%	30.77%	80.00%	20.00%	63.64%	36.36%
Native Hawaiian/Pacific Islan..						100.00%				
Nonresident Alien	40.00%	60.00%	100.00%				66.67%	33.33%		100.00%
Two or more races	81.82%	18.18%	66.67%	33.33%	100.00%		57.14%	42.86%	77.78%	22.22%
Unknown	58.33%	41.67%	22.22%	77.78%	25.00%	75.00%	100.00%		75.00%	25.00%
White	61.90%	38.10%	70.21%	29.79%	74.00%	26.00%	75.56%	24.44%	60.98%	39.02%

## Persistence by Race and Ethnicity: Dance

	2015-16		2016-17		2017-18		2018-19		2019-20	
	Active	Departed	Active	Departed	Active	Departed	Active	Depart..	Active	Departec
American or Alaska Native			100.00%			100.00%				
Asian	100.00%		100.00%		100.00%		100.00%		100.00%	
Black or African American	80.00%	20.00%	100.00%		100.00%		100.00%		100.00%	
Hispanics of any race	100.00%		85.71%	14.29%	92.31%	7.69%	90.91%	9.09%	55.56%	44.44%
Native Hawaiian/Pacific Islan..	50.00%	50.00%	50.00%	50.00%						
Nonresident Alien	100.00%									
Two or more races	75.00%	25.00%	80.00%	20.00%	100.00%		33.33%	66.67%	100.00%	
Unknown	60.00%	40.00%	66.67%	33.33%	80.00%	20.00%	100.00%		50.00%	50.00%
White	93.18%	6.82%	88.89%	11.11%	81.40%	18.60%	77.14%	22.86%	77.42%	22.58%

## Persistence by Race and Ethnicity: Design

	2015-16		2016-17		2017-18		2018-19		2019-20	
	Active	Departed	Active	Departed	Active	Departed	Active	Departed	Active	Departec
Asian	88.89%	11.11%	90.00%	10.00%	100.00%		100.00%		82.35%	17.65%
Black or African American	50.00%	50.00%	100.00%			100.00%	100.00%		75.00%	25.00%
Hispanics of any race	77.78%	22.22%	66.67%	33.33%	81.82%	18.18%	91.67%	8.33%	100.00%	
Nonresident Alien	66.67%	33.33%	100.00%		50.00%	50.00%	50.00%	50.00%		
Two or more races	100.00%		81.82%	18.18%	87.50%	12.50%	87.50%	12.50%	57.14%	42.86%
Unknown	50.00%	50.00%	100.00%		100.00%		100.00%		80.00%	20.00%
White	75.81%	24.19%	78.18%	21.82%	87.76%	12.24%	87.23%	12.77%	68.63%	31.37%

## Persistence by Race and Ethnicity: Film

	2015-16		2016-17		2017-18		2018-19		2019-20	
	Active	Departed	Active	Departed	Active	Departed	Active	Departed	Active	Departed
American or Alaska Native			100.00%		100.00%		100.00%			
Asian			100.00%		100.00%		50.00%	50.00%	100.00%	
Black or African American			100.00%		66.67%	33.33%	50.00%	50.00%		
Hispanics of any race		100.00%	100.00%		75.00%	25.00%	100.00%		100.00%	
Nonresident Alien	100.00%									
Two or more races		100.00%	100.00%		60.00%	40.00%	50.00%	50.00%	60.00%	40.00%
Unknown		100.00%					100.00%		100.00%	
White	100.00%		75.00%	25.00%	76.47%	23.53%	75.00%	25.00%	68.42%	31.58%

## Persistence by Race and Ethnicity: Interior Architecture

	2015-16		2016-17		2017-18		2018-19		2019-20	
	Active		Active	Departed	Active	Departed	Active	Departed	Active	Departed
Asian			100.00%		100.00%		100.00%		80.00%	20.00%
Black or African American							100.00%		100.00%	
Hispanics of any race			100.00%		75.00%	25.00%	100.00%		66.67%	33.33%
Nonresident Alien			100.00%		100.00%		50.00%	50.00%		
Two or more races	100.00%		100.00%		100.00%			100.00%	100.00%	
Unknown			100.00%		100.00%		66.67%	33.33%	100.00%	
White			90.91%	9.09%	90.91%	9.09%	75.00%	25.00%	100.00%	

## Persistence by Race and Ethnicity: Music

	2015-16		2016-17		2017-18		2018-19		2019-20	
	Active	Depart..	Active	Depart..	Active	Depart..	Active	Depart..	Active	Depart..
American or Alaska Native					100.00%		100.00%		100.00%	
Asian	100.00%		50.00%	50.00%	100.00%		75.00%	25.00%	100.00%	
Black or African American		100.00%		100.00%	100.00%			100.00%		100.00%
Hispanics of any race	87.50%	12.50%	81.82%	18.18%	75.00%	25.00%	50.00%	50.00%	66.67%	33.33%
Nonresident Alien	100.00%		100.00%		100.00%		100.00%		100.00%	
Two or more races	60.00%	40.00%	83.33%	16.67%	100.00%		87.50%	12.50%	50.00%	50.00%
Unknown	50.00%	50.00%	75.00%	25.00%	100.00%		100.00%		100.00%	
White	70.37%	29.63%	84.44%	15.56%	69.57%	30.43%	84.21%	15.79%	66.67%	33.33%

## Persistence by Race and Ethnicity: Performance Production

	2015-16		2016-17		2017-18		2018-19		2019-20	
	Active	Departed	Active	Departed	Active	Departed	Active	Departed	Active	Departed
Asian	100.00%		100.00%		100.00%			100.00%		
Black or African American									50.00%	50.00%
Hispanics of any race	100.00%		100.00%		66.67%	33.33%	100.00%		100.00%	
Nonresident Alien							100.00%			100.00%
Two or more races			100.00%		100.00%		33.33%	66.67%		
Unknown	100.00%		100.00%				100.00%			
White	79.41%	20.59%	75.00%	25.00%	76.47%	23.53%	74.07%	25.93%	77.78%	22.22%

## Persistence by Race and Ethnicity: Theater

	2015-16		2016-17		2017-18		2018-19		2019-20	
	Active	Departed	Active	Departed	Active	Departed	Active	Departed	Active	Departed
American or Alaska Native				100.00%			100.00%		100.00%	
Asian	75.00%	25.00%	75.00%	25.00%	100.00%		100.00%		100.00%	
Black or African American	88.89%	11.11%	75.00%	25.00%	57.14%	42.86%	66.67%	33.33%	40.00%	60.00%
Hispanics of any race	75.00%	25.00%	88.24%	11.76%	71.43%	28.57%	85.71%	14.29%	68.75%	31.25%
Native Hawaiian/Pacific Islan..	100.00%		66.67%	33.33%	100.00%		100.00%			
Nonresident Alien					100.00%			100.00%		
Two or more races	84.21%	15.79%	92.31%	7.69%	86.67%	13.33%	75.00%	25.00%	69.23%	30.77%
Unknown	77.78%	22.22%	87.50%	12.50%	66.67%	33.33%	100.00%		71.43%	28.57%
White	93.90%	6.10%	85.39%	14.61%	81.72%	18.28%	89.19%	10.81%	74.19%	25.81%