

Think

Process Book  
by Lucy Potter



A dark, atmospheric photograph of a forest. Tall, slender trees with light-colored bark stand vertically, creating a strong sense of height and depth. The ground is covered in dark, dense foliage and branches. A large, stylized black text overlay is positioned in the center of the image, partially obscuring the trees. The text is written in a bold, sans-serif font and reads "Tikujik".

# Tikujik

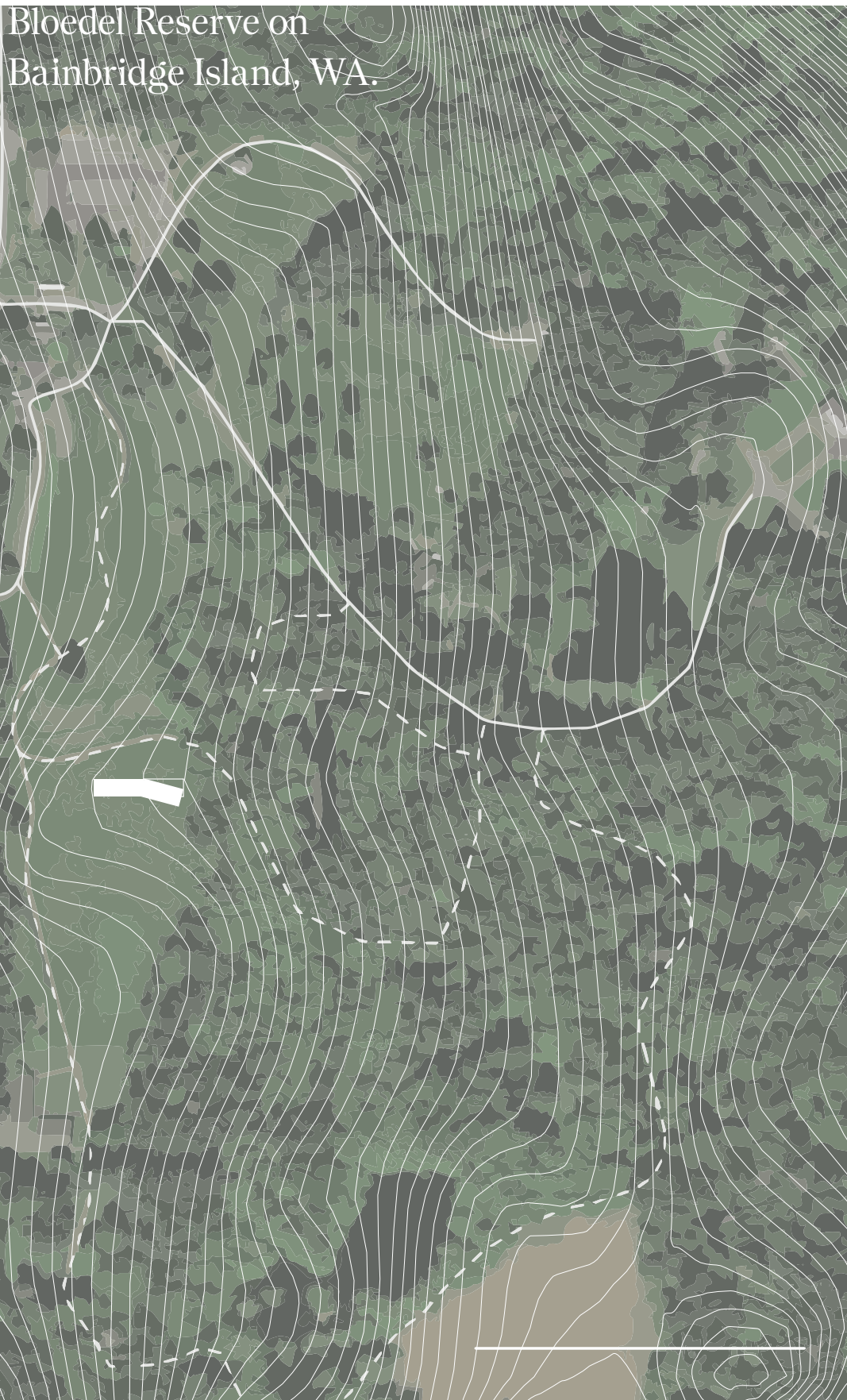
## Project Statement

The intent is to create an interior gathering space for the Bloedel Reserve on Bainbridge Island to foment interconnectivity with nature and community.



# Thyia

Bloedel Reserve on  
Bainbridge Island, WA.



My Grandmother and her  
father, Prentice Bloedel.



Grandmother, great-grandmother, mother and sister

This project is in part, a reconciliation of my family history. In part, it is also a paeon to the Pacific Northwest landscape.



# Thyia

1930



The main residence was built in the style French countryside estate.

## Existing Buildings

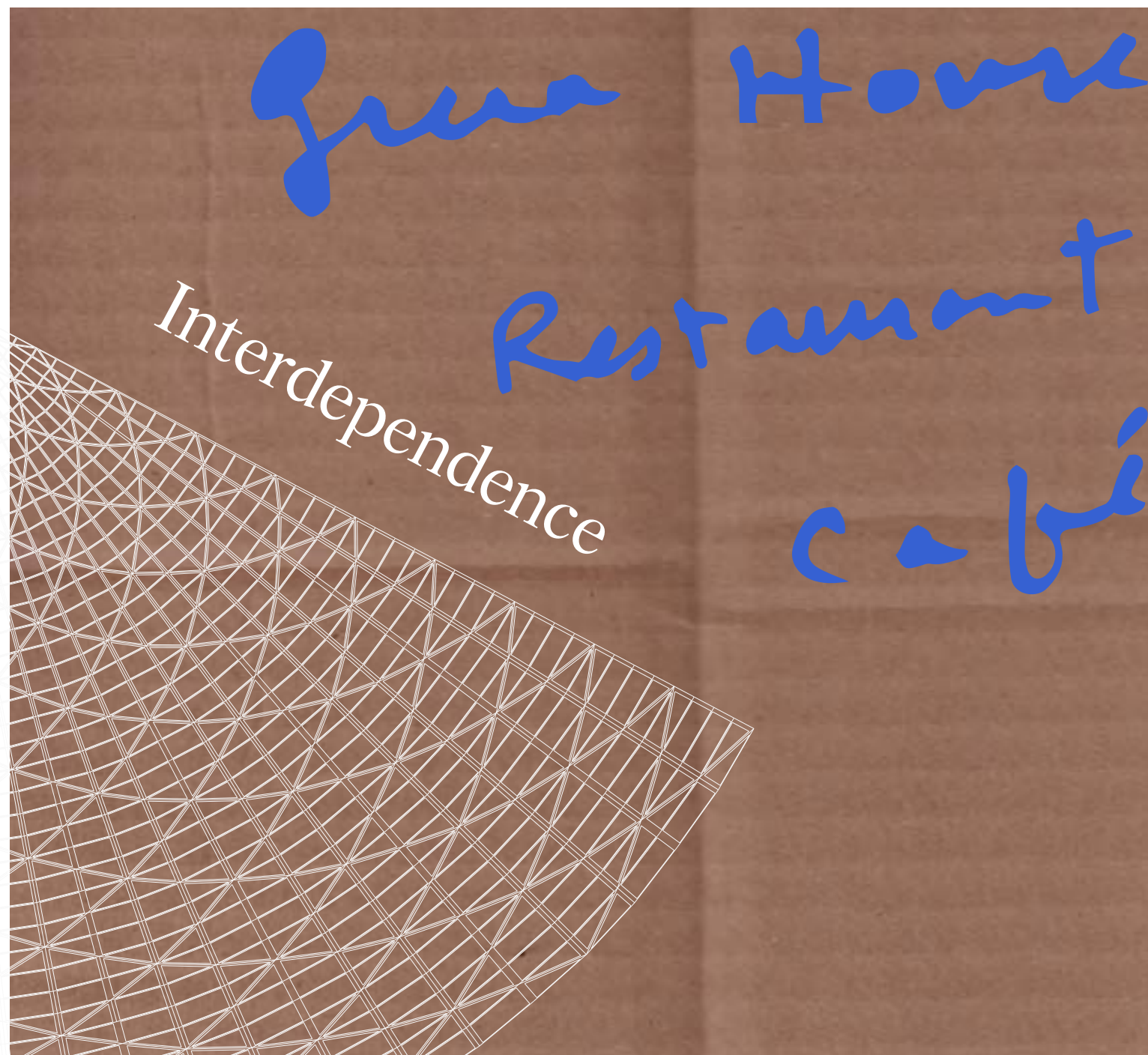
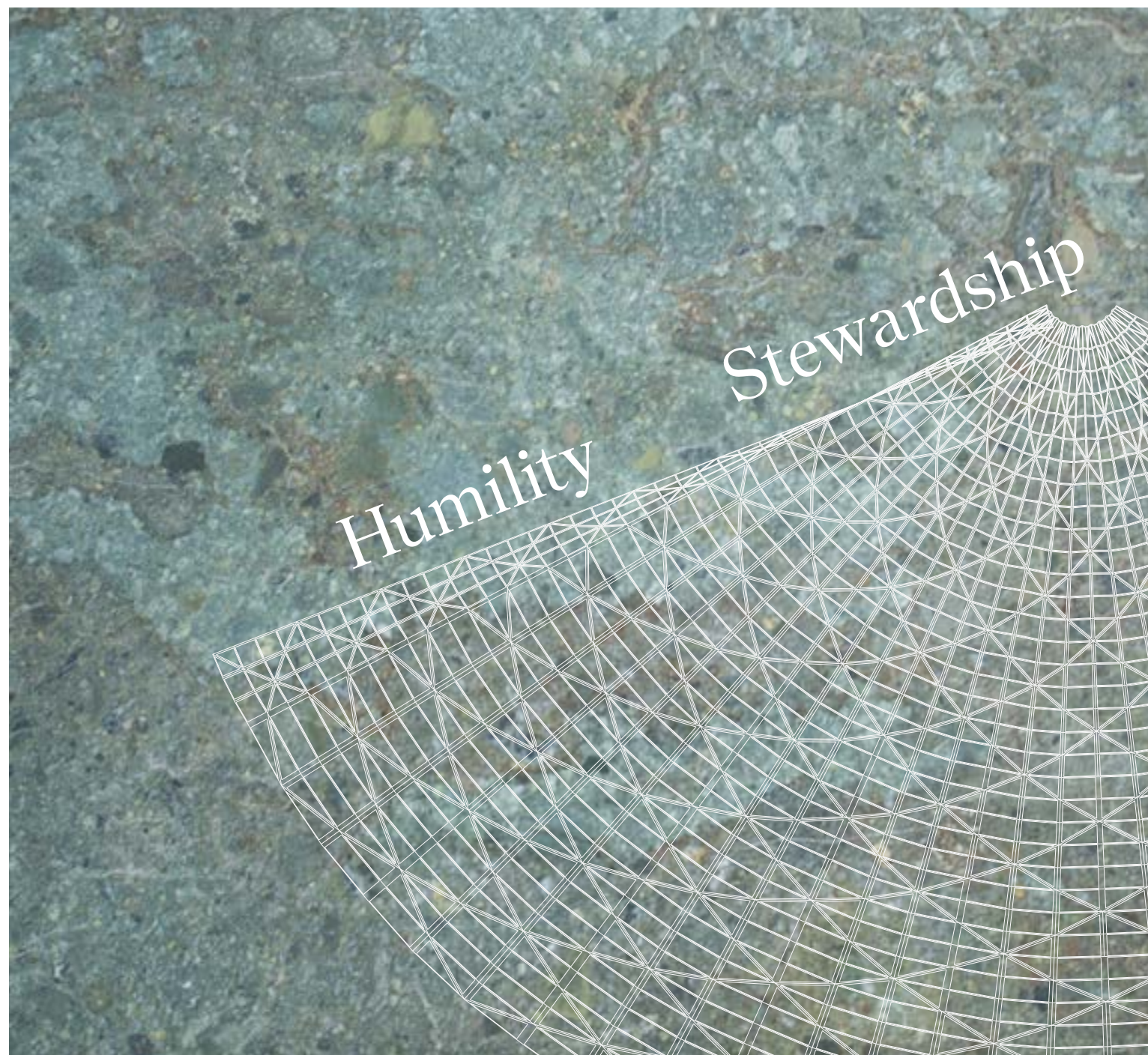
1962



The tea house has Japanese influences.



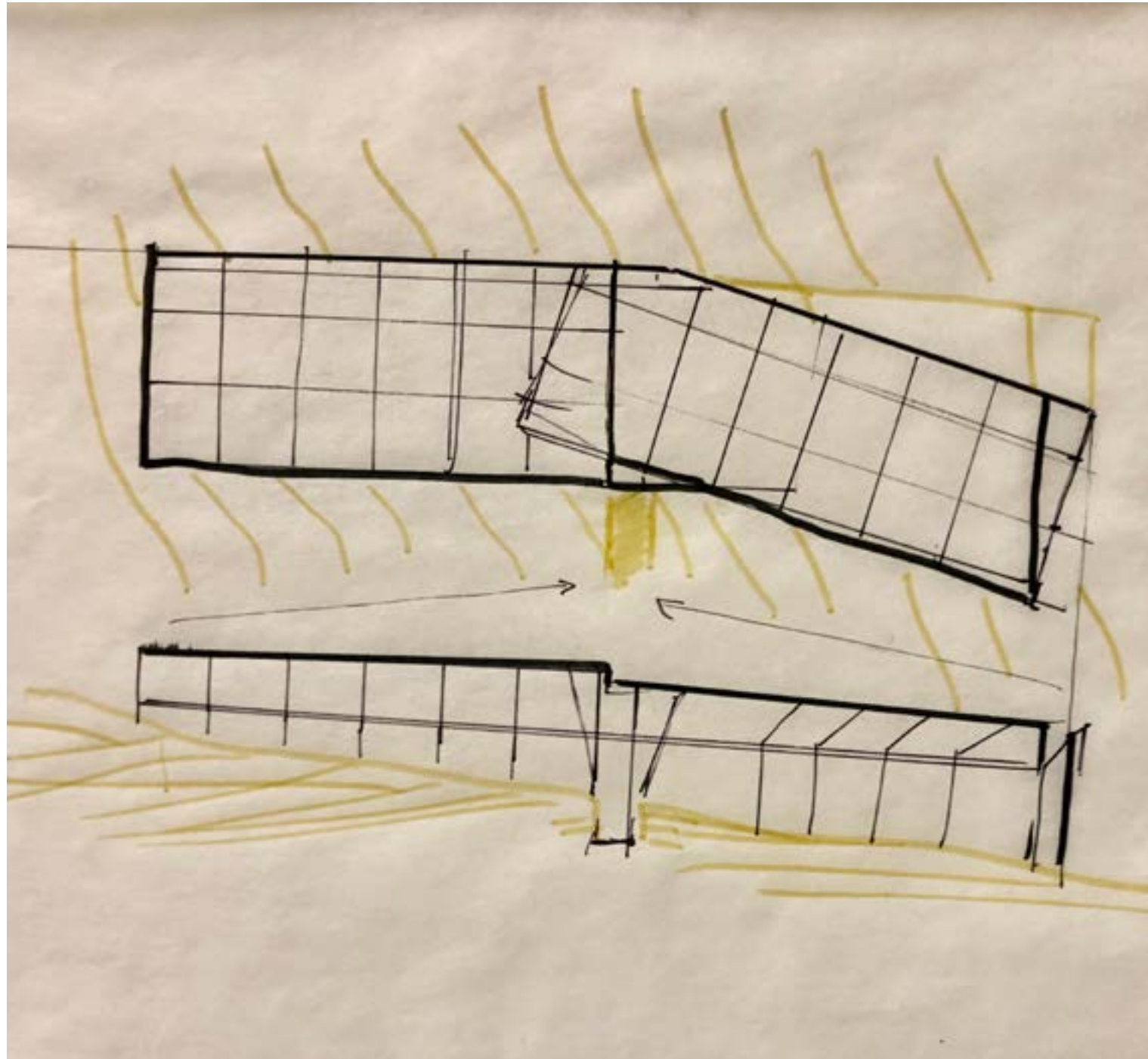
Thyia



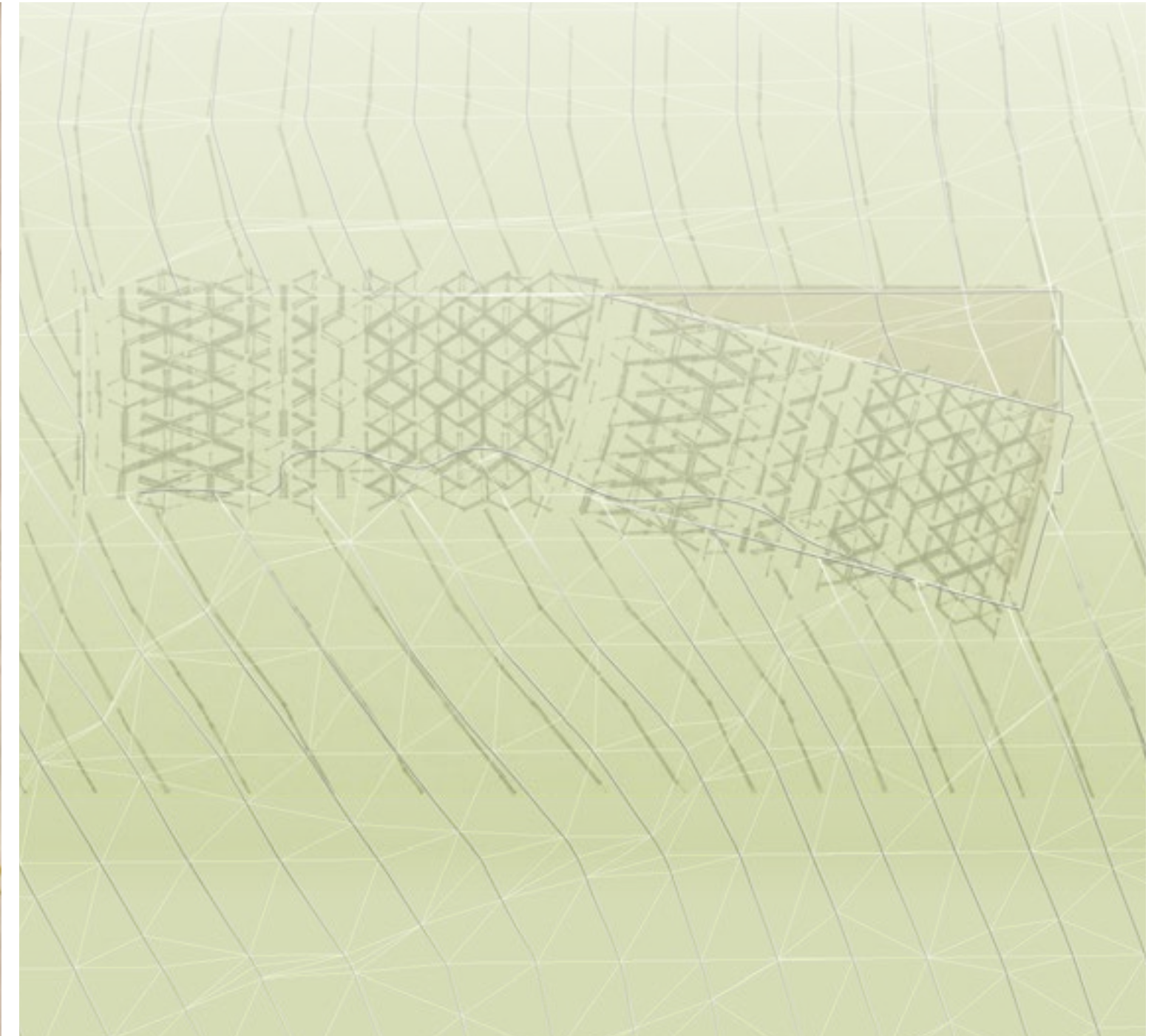


# Thyia

## New Building Footprint



The topography lines gently break the rectilinear footprint.



The roof structure, lamella trusses, is a system of interlocking, woven parts.



Thijs

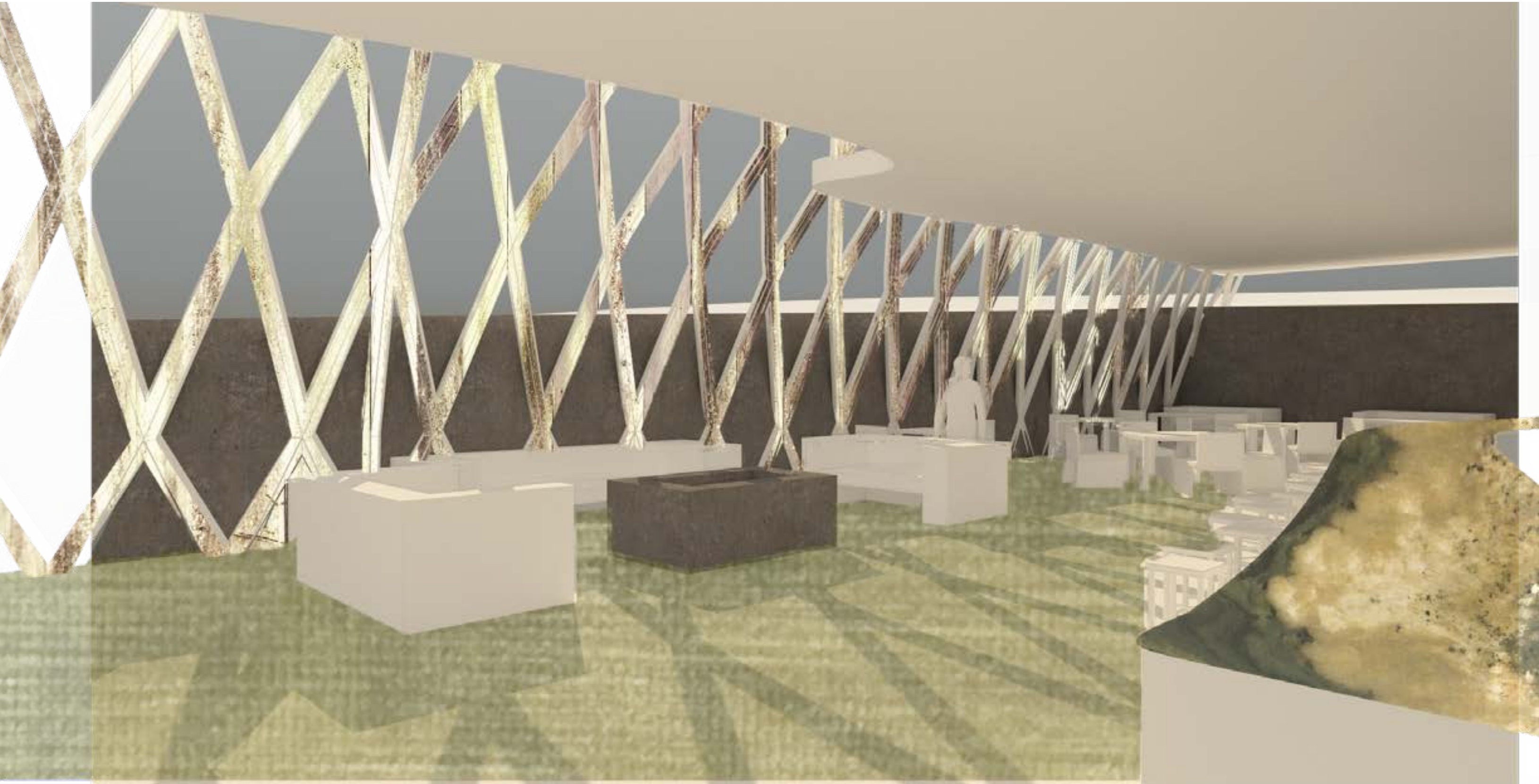
Models, in part





Thyia

## Dining Room Process





Thyia

## Dining Room Process





Thyia

## Dining Room Final

